

ULTRA THIN-PERFECT BASIC DESIGN

Lumaire Basic



3 YEARS WARRANTY

APPLICATIONS

POS Display
Signage
Advertising
Trade fairs
Retail
Interior design
Hotels

FEATURES

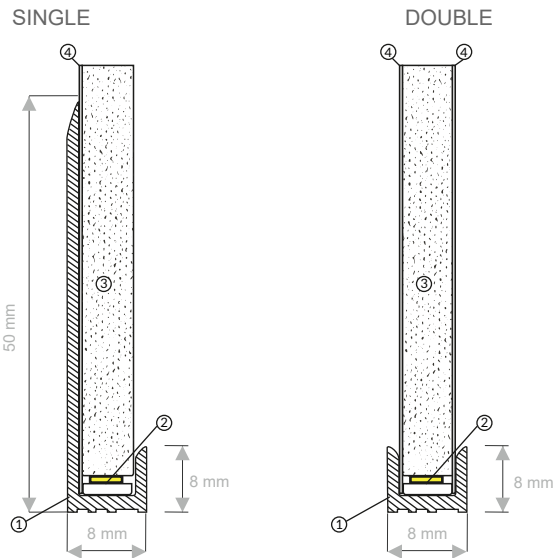
- Thickness is just 5mm (8 mm with heat sink)
- Brightness up to 11000lx on the surface depending on size
- Single or double sided, curved and custom shape options
- Low power consumption
- Wide application possibilities, from interior design to signage
- OPAL front cover 2mm, optional

TECHNICAL SPECIFICATIONS

MAIN MATERIAL Clear acrylic (PMMA)	LUMINOUS EFFICIENCY up to 160lm/W	MAXIMUM SIZE 2450 x 1250 mm	POWER SUPPLY DC 12V / 24V / CC Adaptor
LIGHT TRANSMISSION 93%	COLOUR TEMPERATURE 3000K 4000K 5000K 6500K	LIFETIME > 50,000 hours	WORKING VOLTAGE DC 12V / DC 24V / DC CC
THICKNESS 5mm acrylic, 8mm including heat sink	IP RATING IP 20	OPERATING TEMPERATURE -30°C ~ + 40°C	INPUT VOLTAGE AC 100 ~ 240V 50/60Hz



TECHNICAL DRAWING



- | SINGLE | DOUBLE |
|------------------|------------------|
| 1. Frame basic | 1. Frame basic |
| 2. LED bar | 2. LED bar |
| 3. Acrylic sheet | 3. Acrylic sheet |
| 4. Reflector | 4. Diffuser |

PACKAGE INCLUDES

Power supply (Mean well GST series power supply)

