



LUMAIRE

by **LeddeX**

LED LIGHT SHEETS: DESIGN – MANUFACTURE – LIGHTING PROJECTS

**Lumaire Basic**

ULTRA THIN LIGHTING SOURCE



ULTRA THIN & BRIGHT LED PANEL

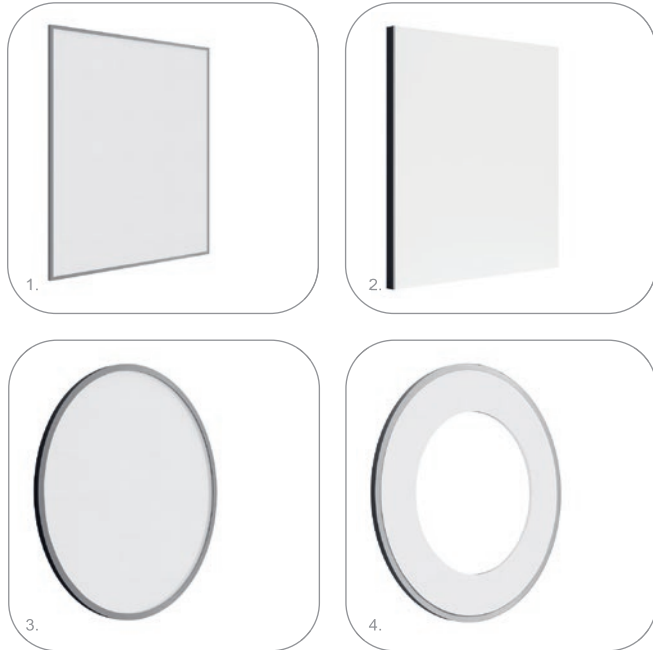
## Lumaire Basic



- Frame thickness is just 8 mm
- Brightness up to 11000lx on the surface depending on size
- Single or double sided, curved and custom shape options
- Low power consumption
- Wide application possibilities, from interior design to signage
- OPAL front cover 2mm, optional

Ultra-thin led sheet Lumaire Basic radiates class. The thinnest LED panel in the market is of 8 mm thickness only. These acrylic light panels scatter the light to perfection, making it irresistible to take the eyes off of the lighting solution. Different design options enable custom application. Perfectly simple customization reveals limitless possibilities to emphasize your individuality.

SUPPORT 24/7, PROTECTION & WARRANTY



## VARIATIONS

### 1. Basic (Classic)

Classic Lumaire Basic, the paper thin led light sheets, remain 8 mm in thickness even with the frame. The minimalistic LED light sheet radiates elegance and style.

### 2. Basic (Milky)

It's the classic Lumaire Basic with Milky coating that dims the bright light and softens the texture of the acrylic sheet.

### 3. Basic (Custom)

With exceptional precision, we make Lumaire Basic custom LED sheet panels of various shapes and sizes. The unique product emphasizes your individuality.

### 4. Basic (Special)

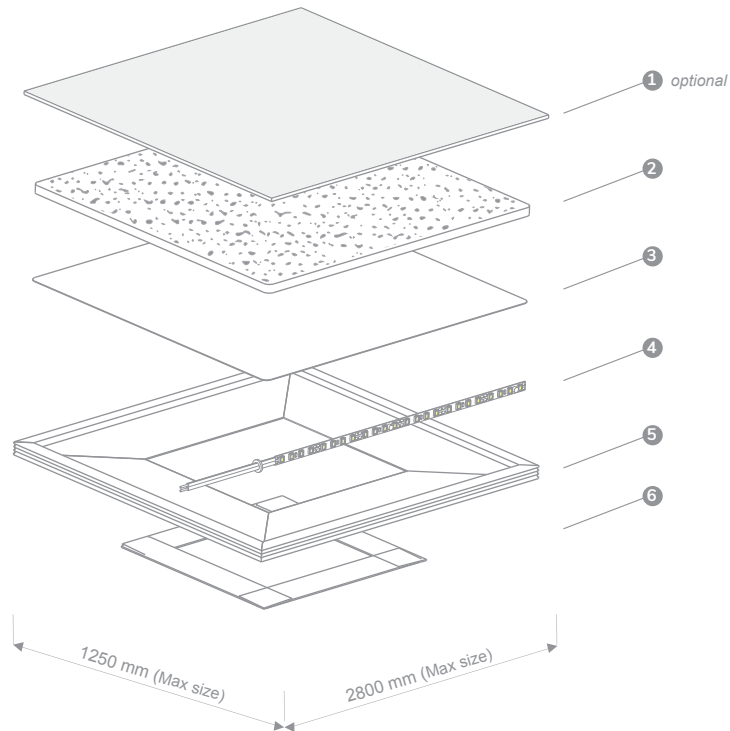
Lumaire Basic of non-standard dimensions. Each centimeter comprises details that make up the outstanding outline. Perfect for individual business and interior lighting needs.

## Technical specifications

MAIN MATERIAL Clear acrylic (PMMA)	LUMINOUS EFFICIENCY up to 160 lm/W	POWER SUPPLY DC 12V / 24V / CC Adaptor	<div><div></div>3000 K</div> <div><div></div>4000 K</div> <div><div></div>5000 K</div> <div><div></div>6500 K</div> <div><div></div>CCT (Special order)</div> <div><div></div>RGB (Special order)</div>
FRAME THICKNESS 8 mm	IP RATING IP 20	WORKING VOLTAGE DC 12V / DC 24V / DC CC <small>(RGB only 12 V)</small>	
MAXIMUM SIZE FROM ONE SHEET 2800 x 1250 mm	LIFETIME > 50,000 hours	INPUT VOLTAGE AC 100 ~ 240V 50/60Hz	
MAXIMUM (PROFILE) LENGHS 5000 mm	OPERATING TEMPERATURE -30°C ~ + 40°C	LED TAPE POWER one-sided 15 W/m two-sided 30 W/m	

PACKAGE INCLUDES:

Power supply (Mean well GST series power supply)



## PRODUCT STRUCTURE

# Technical & usage

1. Opal Plexiglas (optional)
2. Acrylic sheet
3. Reflector
4. Lumaire LED tape
5. Aluminium frame
6. Oracal PVC

### Acrylic sheet

The most important part of the light panel. Acrylic sheet design for even light distribution on the entire surface of the product, leaving no room for hot spots or darker areas you want to light up.

### Reflector

A flexible material designed for supreme light reflection and color enhancement, making the most of LED lighting and acrylic sheet.

### LED strips

High power LED strips with integrated Intelligent Control (IC) system for ultimate reliability and maximum lighting effect.

LUMAIRE PROFILES

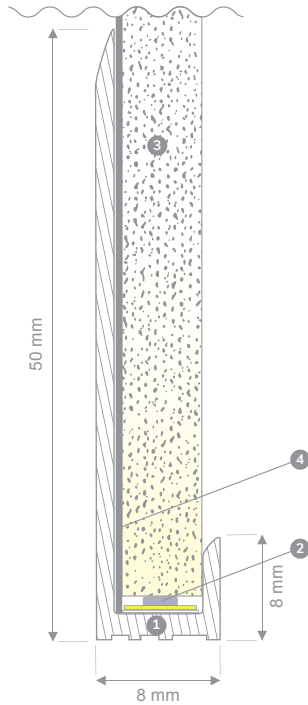
## Lumaire Basic frame components

BASIC LED PANEL - SINGLE

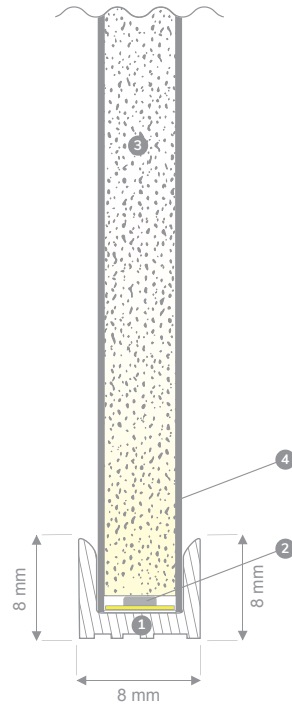
1. Aluminium frame
2. Lumaire LED tape
3. Acrylic sheet
4. Reflector

BASIC LED PANEL - DOUBLE

1. Aluminium frame
2. Lumaire LED tape
3. Acrylic sheet
4. Reflector



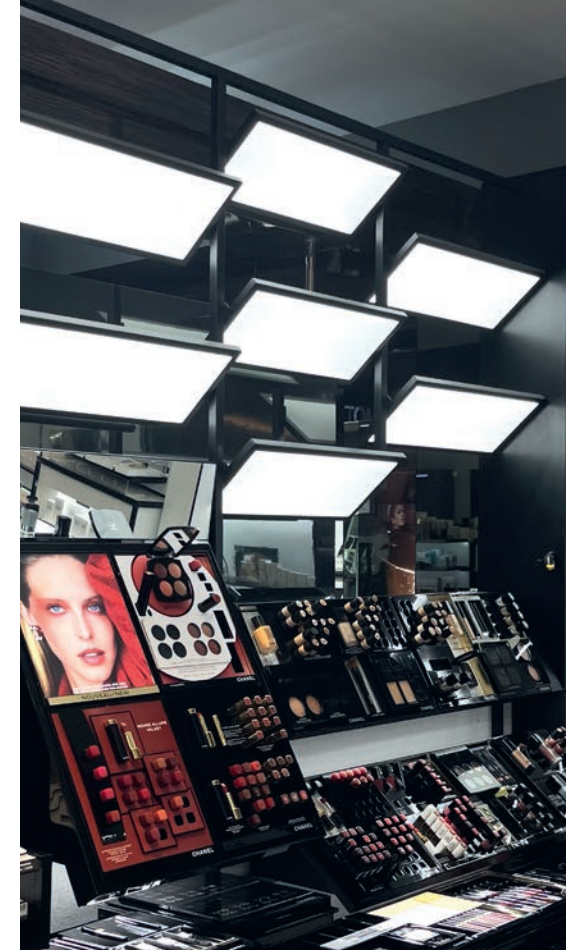
Basic Led panel - SINGLE



Basic Led panel - DOUBLE



## Lighting Projects



We are here to provide you with reliable services.  
Because we are the ones

— who inspire through light

CONTACT:

Phone

Phone: +370 5 212 7244  
Mobile: +370 645 83037

Address

Elektrinės str. 8, LT-03150  
Vilnius, Lithuania

Email

Mail 01: [info@lumaire.eu](mailto:info@lumaire.eu)  
Mail 02: [guoda@leddex.eu](mailto:guoda@leddex.eu)

Designed &  
manufactured  
in Lithuania

