

LUMAIRE

by **Leodex**

LED LIGHT SHEETS: DESIGN – MANUFACTURE – LIGHTING PROJECTS

**Lumaire Magnetic**

ONE CLICK BACKLIT LIGHTING DESIGN



ONE CLICK BACKLIT LIGHTING DESIGN

## Lumaire Magnetic



*Quick and easy print replacement*

- Frame thickness of just 15 mm (single or double-sided)
- Brightness up to 11000 lx on the surface depending on size
- Single or double sided, curved
- Low power consumption
- Wide application possibilities, from interior design to signage
- (OPAL) or clear acrylic 2 mm
- Easy changeable image print

One step, that's what you need to get your Lumaire Magnetic LED panel ready. The product is one of the most popular advertising solutions for a reason. The magnet inside the frame seals the sheets in a second. Unseal them even quicker. Place the suction cup on the surface and replace the backlit (the print image inside the panel) instantly as many times as you need for your advertising purposes.

SUPPORT 24/7, PROTECTION & WARRANTY



## VARIATIONS

### 1. Magnetic one-sided

Luminaire Magnetic with a reflector covering the backlit acrylic panel emits light on the front side of the surface.

### 2. Magnetic two-sided

The diffuser in the magnetic LED panel composition replaces the reflector, so the backlit acrylic sheet emits light over its entire surface, both front and back.

### 3. Magnetic curved

Luminaire Magnetic LED light panels may be either flat or curved. All designs feature high-quality resolution, homogenous and balanced intensity light. The curve depends on the size of the panel.

### 4. Portable stand – large

Choose a portable stand to your Luminaire Magnetic panel. The largest stands start from 100 cm high.

### 5. Portable stand – medium

Medium size stands are up to 100 cm high and 50 cm width. The stand has curved legs.

### 6. Portable stand – small

The smallest portable stands you can pick are up to 50 cm high.

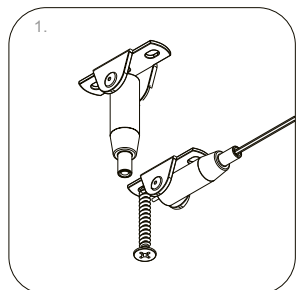
## Technical specifications

MAIN MATERIAL Clear acrylic (PMMA)	LUMINOUS EFFICIENCY up to 160 lm/W	POWER SUPPLY DC 12V / 24V / CC Adaptor	COLOUR TEMPERATURE <div><div></div>3000 K</div> <div><div></div>4000 K</div> <div><div></div>5000 K</div> <div><div></div>6500 K</div> <div><div></div>CCT (Special order)</div> <div><div></div>RGB (Special order; except Magnetic Slim profile)</div>
FRAME THICKNESS 15 mm (S.S. and D.S.)	IP RATING IP 20	WORKING VOLTAGE DC 12V / DC 24V / DC CC <small>(RGB only 12 V)</small>	
MAXIMUM SIZE FROM ONE SHEET 2800 x 1250 mm	LIFETIME > 50,000 hours	INPUT VOLTAGE AC 100 ~ 240V 50/60Hz	
MAXIMUM (PROFILE) LENGHS 5000 mm	OPERATING TEMPERATURE -30°C ~ + 40°C	LED TAPE POWER one-sided 15 W/m two-sided 30 W/m	

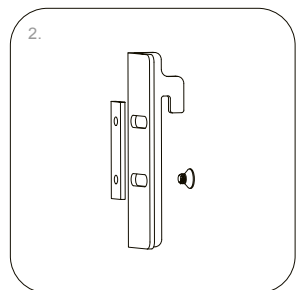
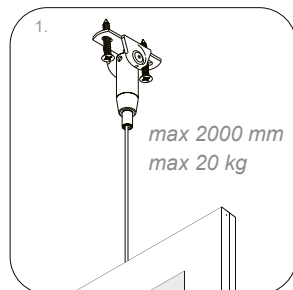
PACKAGE INCLUDES:

Power supply (Mean well GST series power supply)

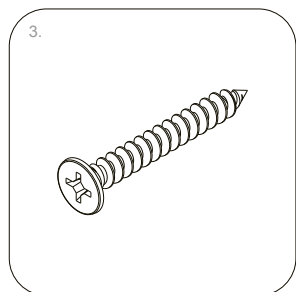
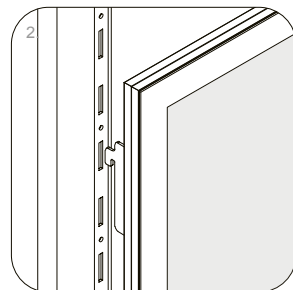
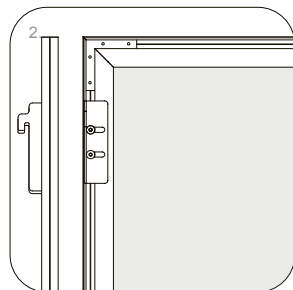
## Fixing & mounting



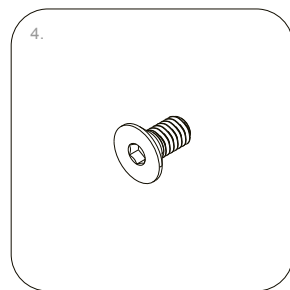
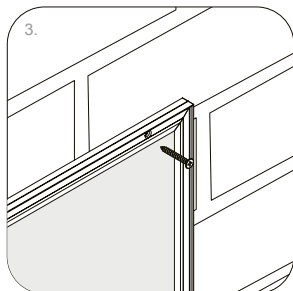
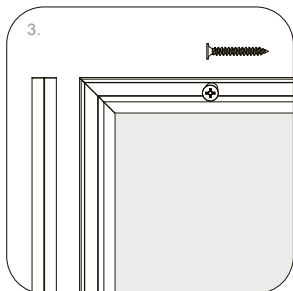
1. Two-point cable fixation



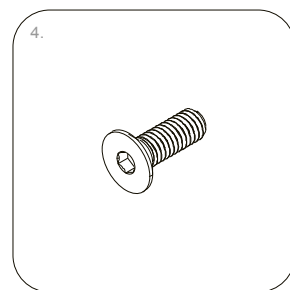
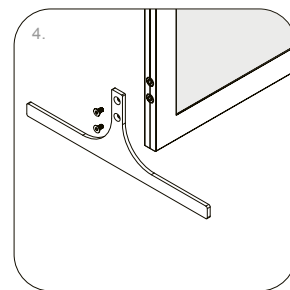
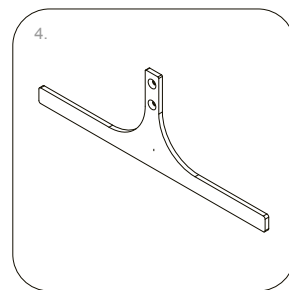
2. Gondola shelving



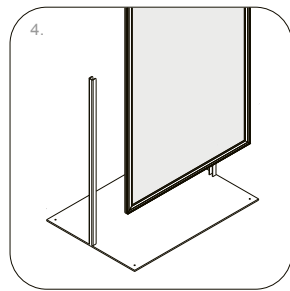
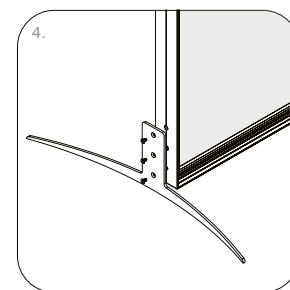
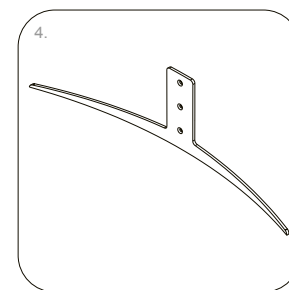
3. Pre-drill installation Ø 3,5 mm



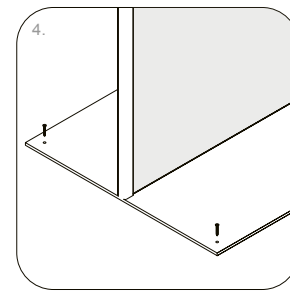
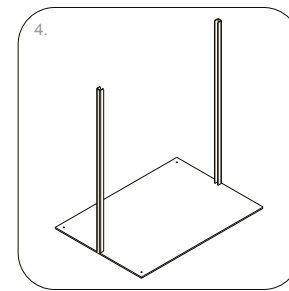
4. Portable stand. Small – up to 50 cm high

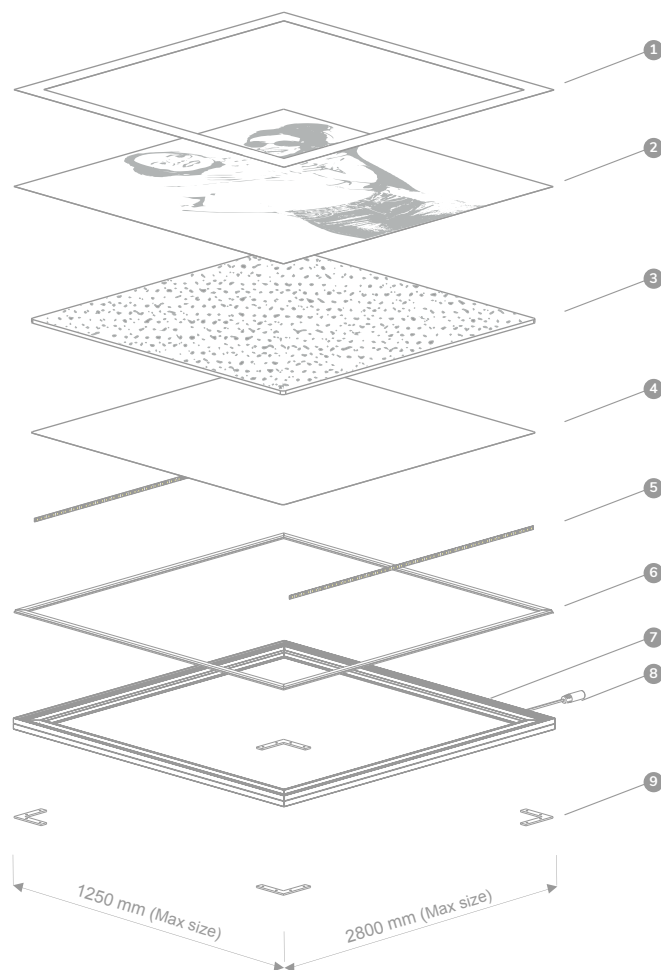


4. Portable stand. Medium – up to 100 cm high



4. Portable stand. Large – up to 100 cm high





## PRODUCT STRUCTURE

# Technical & usage

1. Protective acrylic sheet
2. Print on backlit
3. Lumaire light-guided plate
4. Diffuser (double-sided) / Reflector (single-sided)

5. Lumaire LED tape
6. Magnet
7. Aluminium frame
8. DC cable
9. Brackets

### Protective acrylic sheet

For your convenience, light panel with a protective acrylic sheet which ensures easy print change in just several minutes.

### Print

The final step of the light panel is to choose, design and manufacture the desirable print you want to light up. Every standard back-lit and rigid print works perfectly with Leddex light panels.

### Lumaire light-guided plate

The most important part of the light panel is the acrylic sheet designed for even light distribution on the entire surface of the product, leaving no room for hot spots or darker areas you want to light up.

### Reflector

A flexible material designed for supreme light reflection and color enhancement, making the most of LED lighting and acrylic sheet.

### LED strips

High power LED strips with integrated Intelligent Control (IC) system for ultimate reliability and maximum lighting effect.

### Magnetic frame

To deal with the heat LED bar is generating, high cooling efficiency aluminum frames are used to cool down the LED bar and to ensure optimal operating temperatures and long lifespan of the product.

## LUMAIRE PROFILES

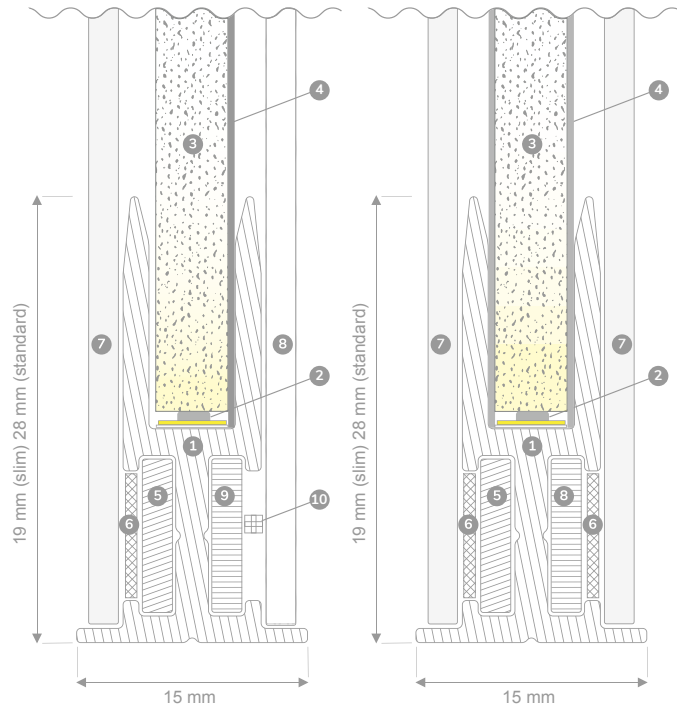
# Lumaire Magnetic frame components

### MAGNETIC LED PANEL - SINGLE

1. Aluminium frame
2. LED strips
3. Lumaire light-guided plate
4. Reflector lumaire
5. Magnet
6. Metal strip
7. Protective acrylic sheet
8. Aluminum back plate (optional)
9. Brackets L shape
10. Screw

### MAGNETIC LED PANEL - DOUBLE

1. Aluminium frame
2. LED strips
3. Lumaire light-guided plate
4. Diffuser
5. Magnet
6. Metal strip
7. Protective acrylic sheet
8. Brackets



Magnetic Led panel - SINGLE

Magnetic Led panel - DOUBLE

Example



PRINT ON BACKLIT

## Magnetic Standard profile: file preparation

The standard profile, as well as the magnetic passe-partout, have a width of 29 mm.

PRINTING SIZE

The print size should be 10 mm smaller from each border.

VISIBLE SIZE

Please note that the visible size is smaller than the printing size. The standard magnetic passe-partout is 29 mm in width.

DIGITAL PRINTING

For color profile and graphic file preparation for printing, please get in touch with your printing house.

CALCULATION EXAMPLE

EXTERNAL SIZE	PRINT SIZE	VISIBLE SIZE
500 x 700	480 x 680	442 x 642
1000 x 700	980 x 680	942 x 642
297 x 420 <i>A3</i>	277 x 400	239 x 362
594 x 840 <i>A1</i>	574 x 820	536 x 782
2800 x 1250 <i>Max size</i>	2780 x 1230	2742 x 1192

Example



PRINT ON BACKLIT

# Magnetic Slim profile: file preparation

The standard profile, as well as the magnetic passe-partout, have a width of 19 mm.

PRINTING SIZE

The print size should be 10 mm smaller from each border.

VISIBLE SIZE

Please note that the visible size is smaller than the printing size. The slim magnetic passe-partout is 19 mm in width.

DIGITAL PRINTING

For color profile and graphic file preparation for printing, please get in touch with your printing house.

CALCULATION EXAMPLE

EXTERNAL SIZE	PRINT SIZE	VISIBLE SIZE
500 x 700	480 x 680	462 x 662
1000 x 700	980 x 680	962 x 662
297 x 420 <i>A3</i>	277 x 400	259 x 382
594 x 840 <i>A1</i>	574 x 820	556 x 802
2800 x 1250 <i>Max size</i>	2780 x 1230	2762 x 1212

## Lighting Projects



We are here to provide you with reliable services.  
Because we are the ones

— who inspire through light

CONTACT:

Phone

Phone: +370 5 212 7244  
Mobile: +370 645 83037

Adress

Elektrinės str. 8, LT-03150  
Vilnius, Lithuania

Email

Mail 01: [info@lumaire.eu](mailto:info@lumaire.eu)  
Mail 02: [guoda@leddex.eu](mailto:guoda@leddex.eu)

Designed &  
manufactured  
in Lithuania

